

How to Set Up a Security Key for MFA

Objectives

Use multi-factor authentication (MFA) by setting up a security key as a sign-in method to access your Fleming account. These directions are for a specific security key: "Security Key NFC," which is one of several names/types of YubiKeys made by Yubico. Several steps here follow choices for Windows computers; however, the steps for macOS computers are similar.

These directions involve three main steps:

- 1 — [Set a FIDO2 PIN on Your YubiKey](#)
- 2 — [Add Your YubiKey as a Sign-in Method to Your Account's Security Info](#)
- 3 — [Test Signing in Using Your YubiKey](#)

Directions

1 — Set a FIDO2 PIN on Your YubiKey

- From your computer, visit this web page to download YubiKey Manager:
<https://www.yubico.com/support/download/yubikey-manager/>
- Select the appropriate download link for your computer.

Downloads

- [Linux – Ubuntu Download](#)
- [Linux – AppImage Download](#)
- [Linux – Source Code Download](#)
- [macOS Download](#)
- [Windows \(x64\) Download](#)
- [Windows \(x86\) Download](#)

- Launch the downloaded setup file to install YubiKey Manager; select all default options.

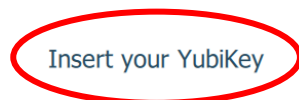
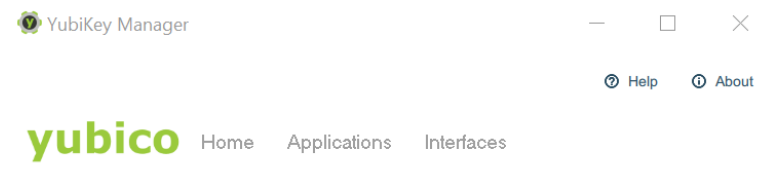


yubikey-manager
-qt-1.2.4-win64

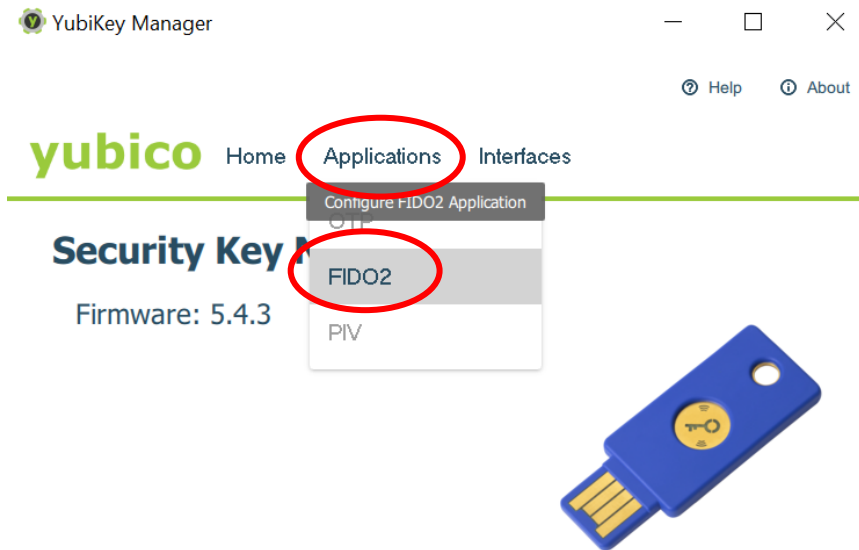
- Open YubiKey Manager on your computer.



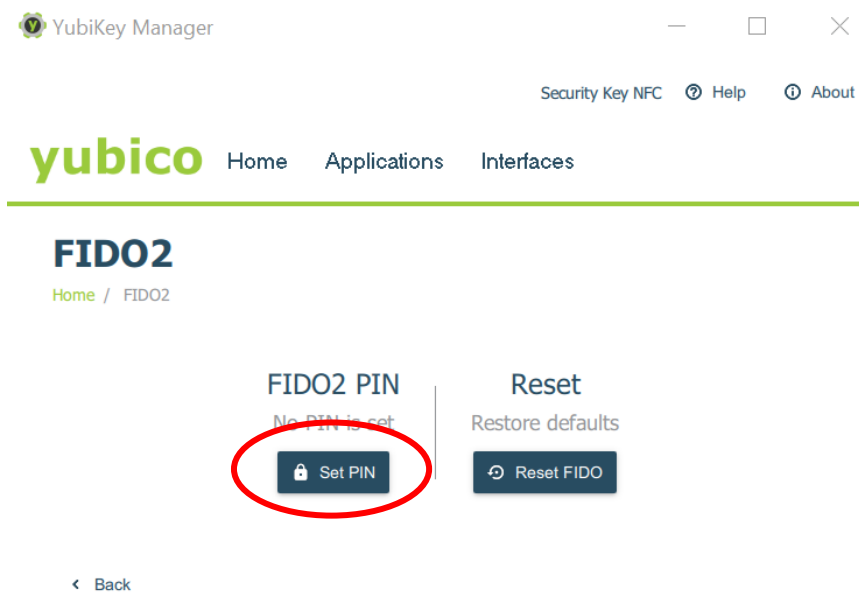
- Insert your YubiKey into a USB port on your computer.



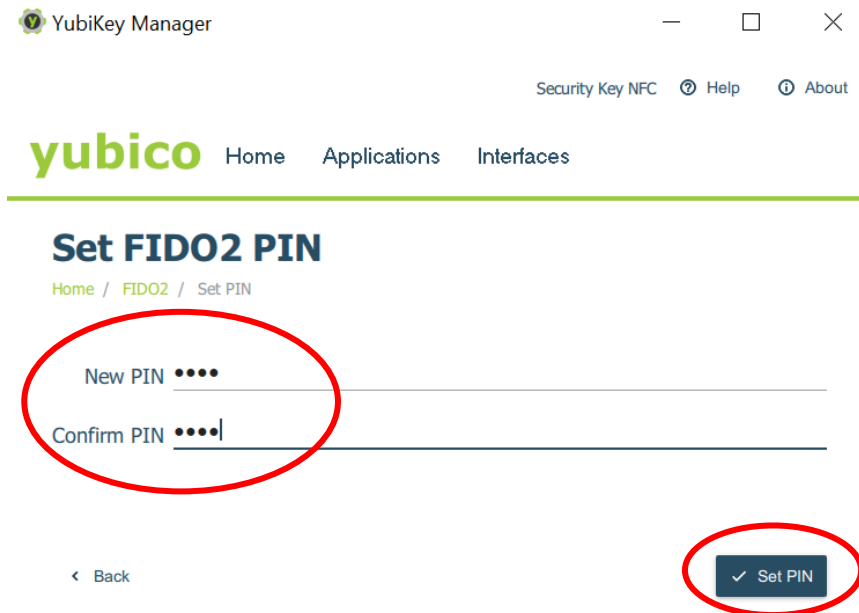
- Select "Applications" and then select "FIDO2."



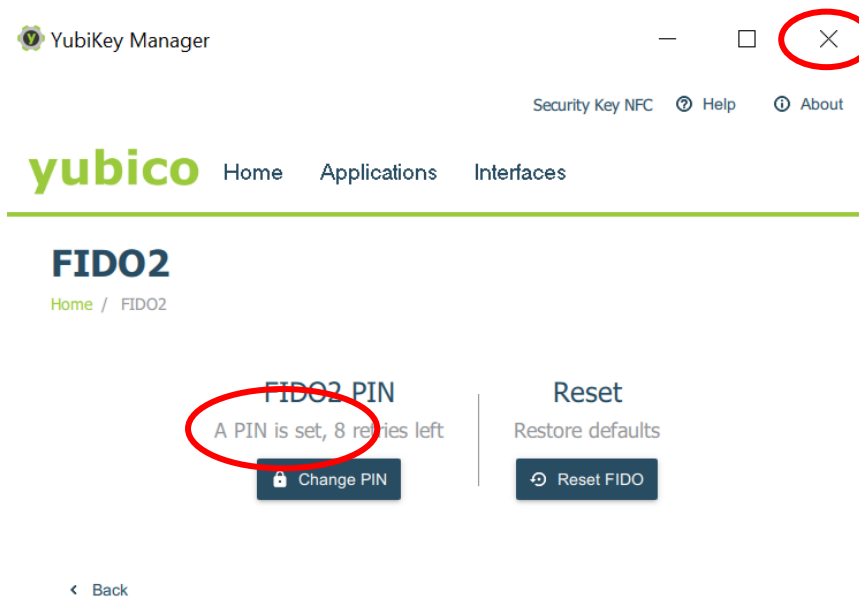
- Select "Set PIN" to configure a FIDO2 PIN.



- Enter a PIN—whatever you like—and then select "Set PIN."

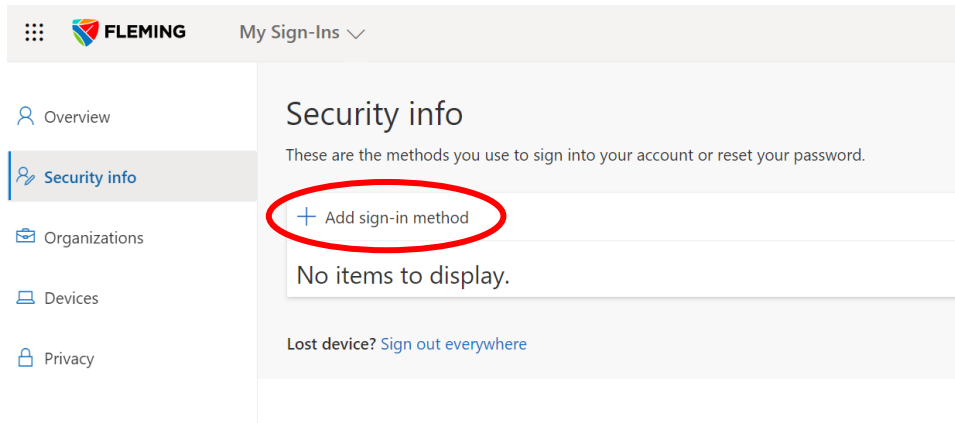


- Confirm that a PIN is set and then close YubiKey Manager.

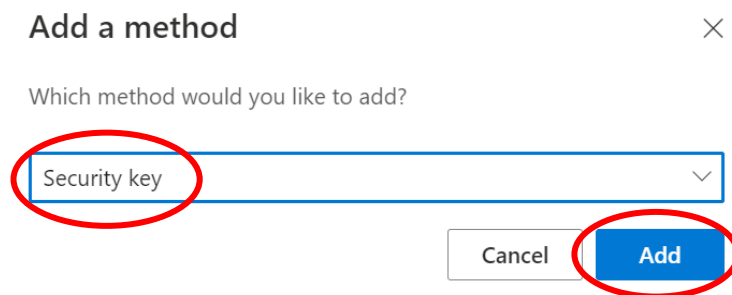


2 — Add Your YubiKey to Your Account's Security Info

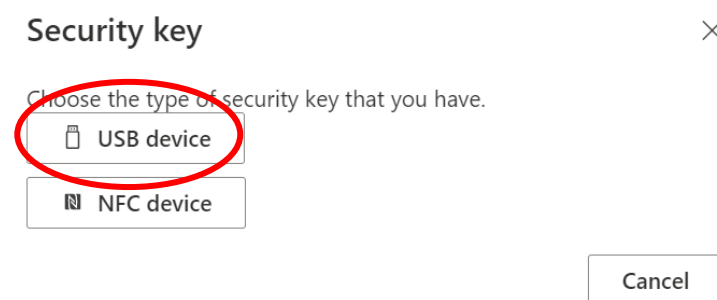
- Visit this web page, while signed in to Microsoft with your Fleming credentials:
<https://mysignins.microsoft.com/security-info>
- Select "Add sign-in method."



- From the drop-down list, select "Security key" and then select "Add."



- Select "USB device" as the type. Note that your YubiKey can also use NFC, which is used when connecting to NFC devices, such as a phone, so if your computer is equipped with an NFC reader, you could alternatively select "NFC device."



- Read the message and then select "Next."

Security key



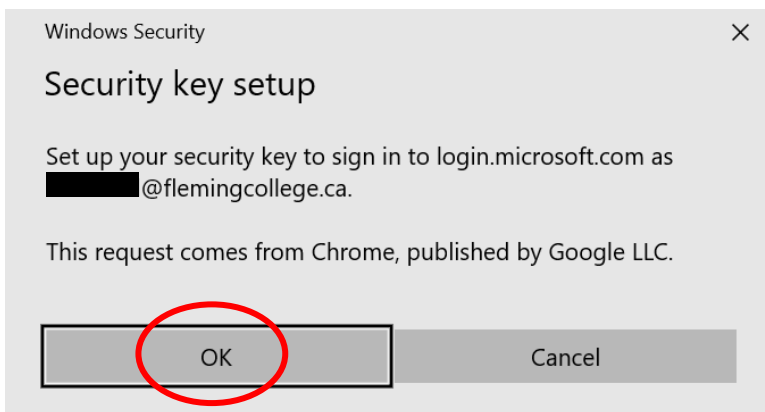
Have your key ready.

When you choose Next, you will be prompted to plug your security key into the USB port. Then, touch the button or the sensor on your security key to finish setting up your device.

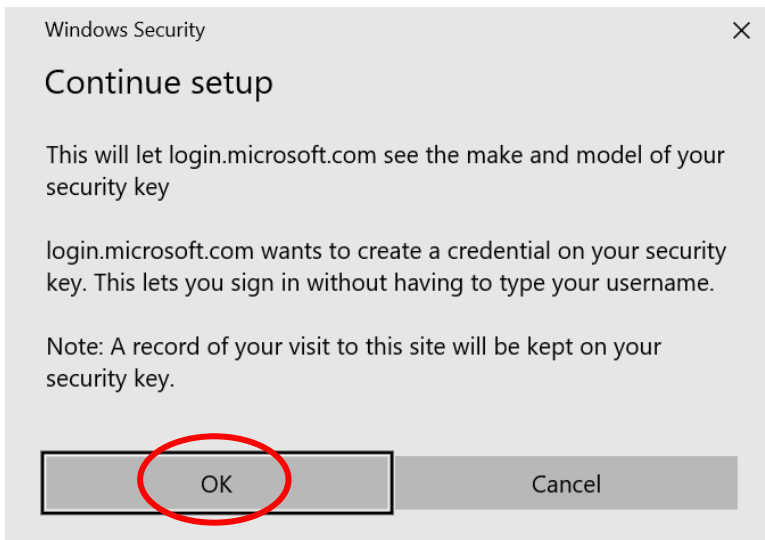
For more detailed instructions, visit your key manufacturer's website.



- Read the message and then select "OK."



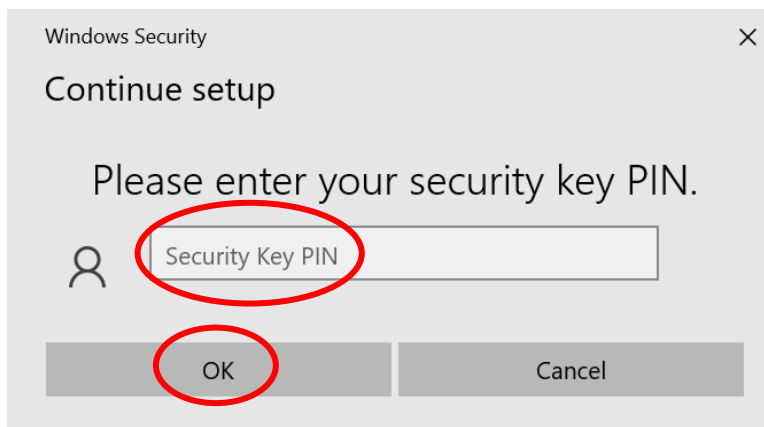
- Read the message and then select "OK."



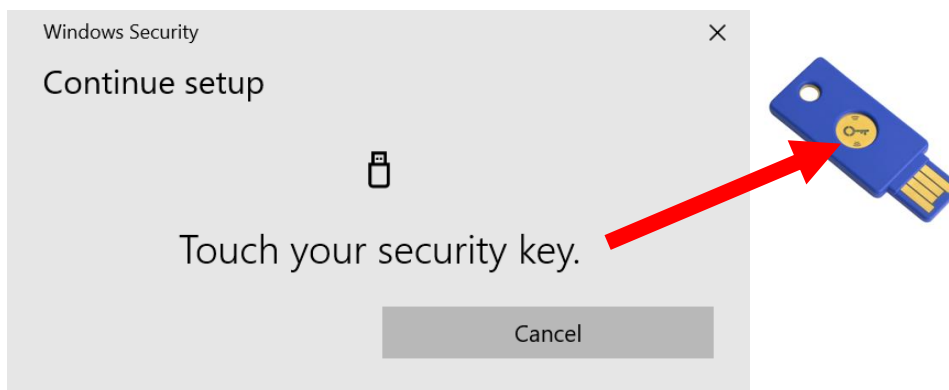
- Insert your YubiKey into a USB port on your computer.



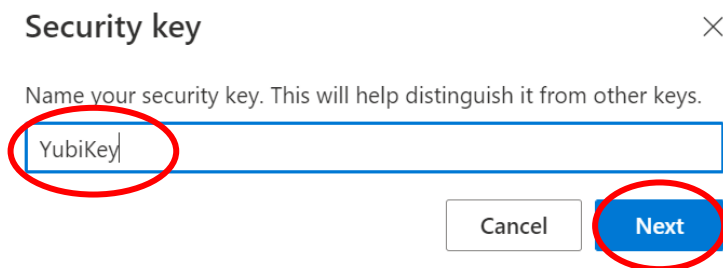
- Enter the PIN that you set on your YubiKey and then select "OK."



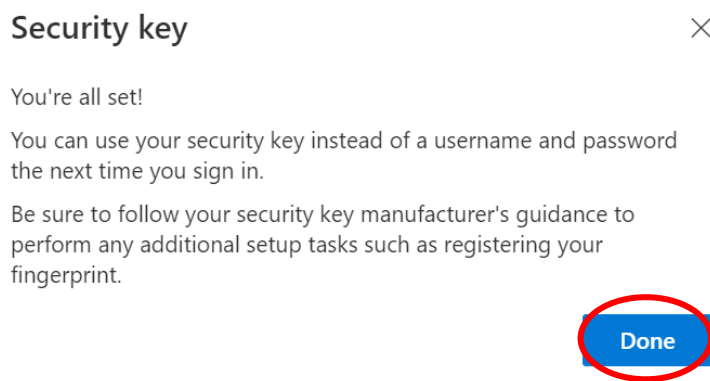
- Touch the sensor on your YubiKey while it remains connected to a USB port on your computer.



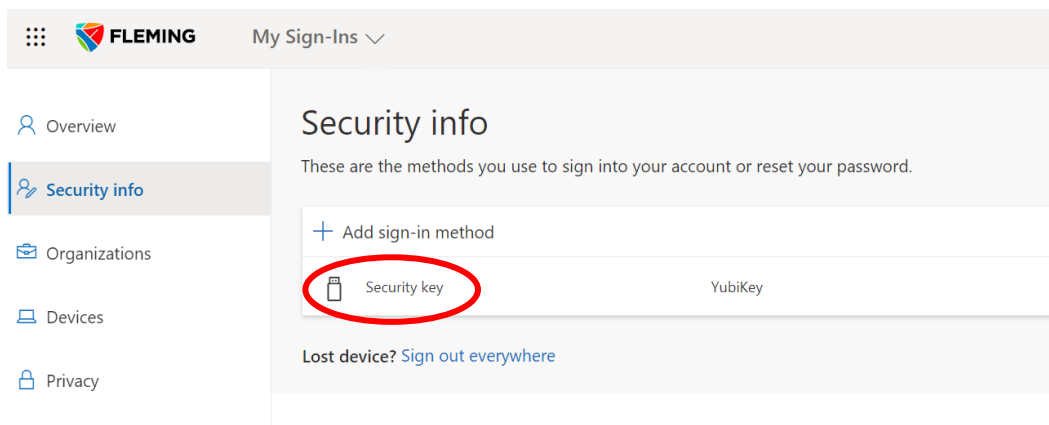
- Enter a name—whatever you like—for your YubiKey and then select "Next."



- Read the message and then select "Done."

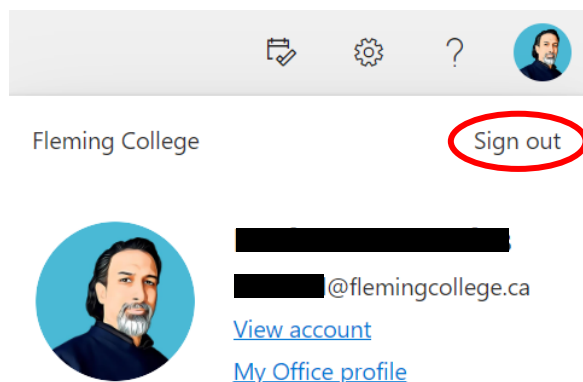


- Confirm that your YubiKey has been added as a sign-in method and then close the security info web page.

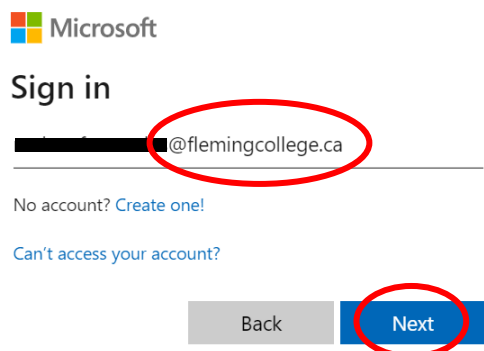


3 — Test Signing in Using Your YubiKey

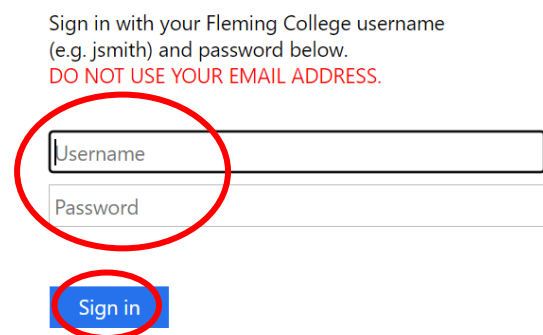
- Remove your YubiKey from your computer, sign out from your Fleming Microsoft account, and then close all browser windows.



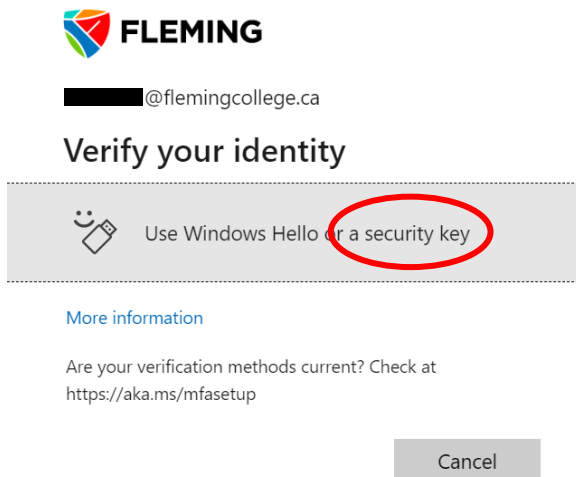
- Reopen a browser window and visit this web page to sign back in to your Fleming Microsoft account: <https://login.microsoftonline.com/>
- Enter your Fleming email address and then select "Next."



- Enter your Fleming username and password and then select "Sign in."



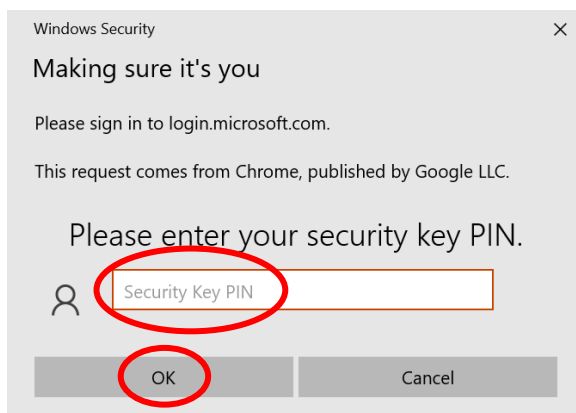
- Select the option that allows you to use "a security key."



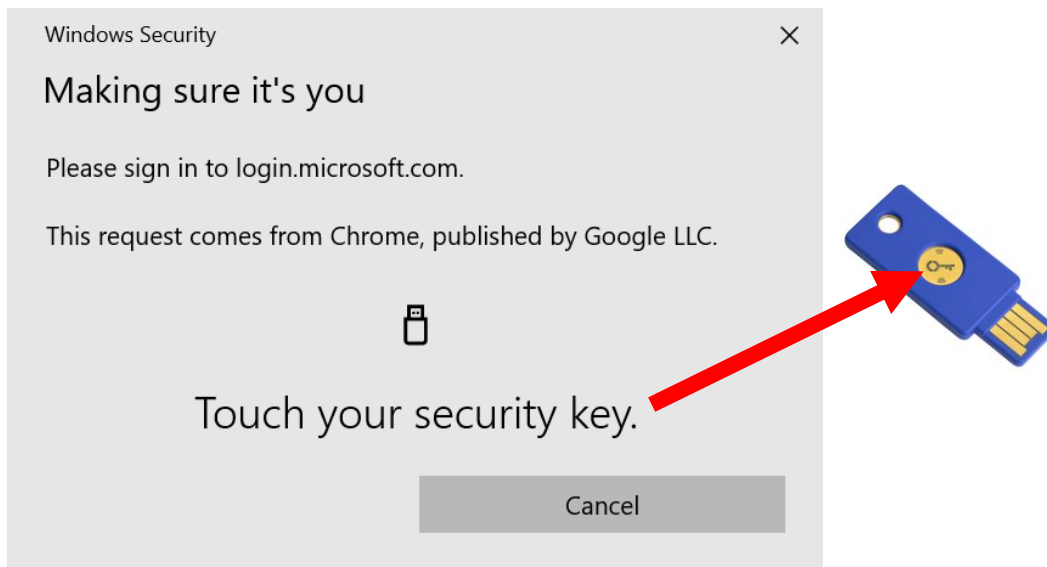
- Insert your YubiKey into a USB port on your computer.



- Enter the PIN that you set on your YubiKey and then select "OK."



- Touch the sensor on your YubiKey while it remains connected to a USB port on your computer.



- Choose "Yes" or "No," depending on your preference. At this point, you may remove your YubiKey from your computer.

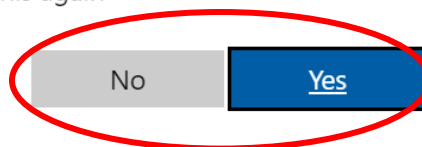


██████████@flemingcollege.ca

Stay signed in?

Do this to reduce the number of times you are asked to sign in.

Don't show this again



FAQs

Question — From where can you purchase this YubiKey?

Answer — Amazon Canada: <https://www.amazon.ca/dp/B07M8YBWQZ/>